



## COMPLETION REPORT

### **LMS Community Marina Visitor Facilities Project**

Ladysmith Maritime Society  
May 20, 2012

#### **APPLICANT INFORMATION**

Ladysmith Maritime Society  
PO Box 1030  
Ladysmith, BC V9G 1A7  
Contact: Doug Bell, President

Phone	250.245.0109
Fax	250.245.0108
Email	<a href="mailto:lmscommunitymarina@telus.net">lmscommunitymarina@telus.net</a>
Web	<a href="http://www.ladysmithmaritimesociety.ca">www.ladysmithmaritimesociety.ca</a>



# Ladysmith Maritime Society

[www.ladysmithmaritimesociety.ca](http://www.ladysmithmaritimesociety.ca)

P.O. Box 1030, Ladysmith, B.C., V9G 1A7

Tel: 250-245-0109 Fax: 250-245-0108

May 20, 2012

Line Robert  
Project Manager  
Island Coastal Economic Trust  
#201A - 2435 Mansfield Drive  
Courtenay, British Columbia  
V9N 2M2

**Re: Completion Report: LMS Community Marina Visitor Facilities Project**

The Ladysmith Maritime Society is pleased to confirm the successful completion of the LMS Community Marina Visitor Facilities Project. Please find the Completion Report attached for your files.

On behalf of the Ladysmith Maritime Society, please accept our most sincere thanks and appreciation for your generous support of this project. I understand that ICET's thorough analysis and significant support of this project made it easier for other funders to extend their financial assistance to make this project a reality.

I trust that the attached Completion Report will bring successful closure to our project file with the Trust. Should you require any further information, please feel free to contact me directly at 250-246-5388 or [d.h.bell@shaw.ca](mailto:d.h.bell@shaw.ca).

Sincerely,

Doug Bell, President  
Ladysmith Maritime Society

## Completion Report Contents

- Introduction & Strategic Context
- Summary of Work & Methodology
- Completion of Project Objectives
- Scope Modification
- Job creation
- Economic Impact
- Financial Statement
- Attachments
  - i. Job Performance Assessment*
  - ii. Media Clippings of Ladysmith Community Marina*
  - iii. Boater Rendezvous Promotional Brochure*
  - iv. Letters of Support*

## 1. Introduction & Strategic Context

Ladysmith Maritime Society (LMS) is a non-profit charitable organization based in Ladysmith, British Columbia. LMS operates the community marina under license from the Town of Ladysmith and has long term tenure on the water lot.

The focus of the *LMS Community Marina Visitor Facilities Project* was to help Ladysmith and area, hard hit by industrial plant closures, diversify its economy through building permanent infrastructure that would attract boaters from outside the region and deliver sustained economic benefits to businesses in the area. The project upgraded and expanded the community marina in order to attract and accommodate increased numbers of visiting boaters. The project was undertaken in close collaboration with and full support of both the Town of Ladysmith and the Stz'uminus First Nation.

Marine tourism is an important economic driver for southern Vancouver Island with considerable potential for significant and growing spending in local communities each year. A lack of essential infrastructure within this network is a major impediment to the growth of marine tourism. The foundation of a healthy marine tourism sector requires a network of marinas in the area that provide visitors with variety and with the moorage and amenities they require. Ladysmith is the northern gateway to the Gulf Islands and is ideally situated to be an important part of this network.

New infrastructure installed by this project includes a floating reception centre with important amenities for visiting boaters, improved accessibility and safety features, upgraded electrical service, and a marine sewage pump-out station available to all users of the harbour. While essential to attract marine tourists, these facilities also benefit the entire community through improved environmental health of Ladysmith Harbour, and through safer and more secure access to the water front by residents, including those with physical disabilities. The Stz'uminus First Nation welcomed the initiatives to improve the health of the Harbour, to increase marine tourism, and to ensure that all cultures of the harbour were well expressed.

LMS is extremely grateful for the support given by Island Coastal Economic Trust (ICET) to this project.

The funding from ICET was the tipping Point that paved the way for other organizations to support the project and bring it to fruition. Other funders were clearly assured by the quality of analytical work undertaken by ICET prior to its approval of the project.



***Stz'uminus First Nation Chief John Elliott, Ladysmith Mayor Rob Hutchins, and the Honourable John Duncan, Minister of Aboriginal Affairs and Northern Development, at the Opening Ceremony for the new Visitor Reception Centre***



## 2. Summary of Work / Methodology

The purpose of the Visitor Facilities Project was to deliver new and sustained economic benefit to the region through the development of marina infrastructure that would attract large-scale marine tourism to the coastal region. This would advance the profile of eastern Vancouver Island and the Southern Gulf Islands as a destination of choice for visiting recreational boaters.

The project included construction of the following infrastructure:

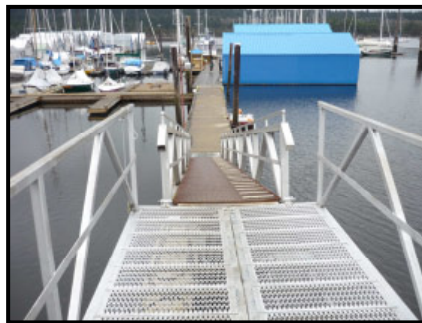
**Visitor Reception Centre** – an 1,800 square foot building including amenities important to marine visitors – showers, washrooms, laundry, hospitality meeting space, and Wi-Fi access. It also houses the marina office and a special events area for hosting group functions, including large-scale ‘boater rendezvous’.



**Sewage Pump-out Station** – installed near the outer edge of the marina for use by all users of the harbour. Pump-out facilities are limited in the Cowichan Marine Corridor and Gulf Islands – the station will be a major draw to the area and will improve the environmental health of the harbour, which is an historically significant food source for the Stz’uminus First Nation and an important site for the local shellfish industry.

**Electrical Upgrade** – included installation of an enhanced 600-volt electrical supply to the marina to provide the power expected by today’s marine tourists.

**Accessibility Improvements** – the ramp and docks linking the shore to the floating visitor reception centre were widened and made more stable to accommodate users of all ages, as well as wheelchairs, carts, and increased foot traffic.



↑ Ramp & docks prior to the accessibility upgrade.

Accessibility upgrade complete: anti-slip finishing also improves safety. ↓



### 3. Completion of Project Objectives

This confirms that each of the key infrastructure supports, as outlined above, were complete as of March 31, 2012.

### 4. Scope Modification

The scope of the project was expanded to include the elements outlined below, some as the result of increased requirements/costs, and others due to the availability of additional funding:

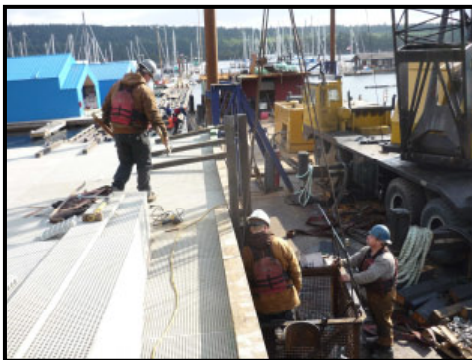
- Utility upgrades: municipal water and sewer service to the marina; piping connection to the sewage pump-out; and, installation of a fire hydrant at an additional cost of \$44,000, shared by the Town of Ladysmith and LMS;
- Construction of an electrical building to support the marina electrical upgrade at a cost of \$25,000 covered by LMS;
- Expanded dock accessibility upgrades, including the area used by the Cowichan Disabled Sailing Association (see attached letter of support) at a cost of \$75,000, fully funded through a grant from the Government of Canada's Enabling Accessibility Fund;
- Installation of security cameras, a fully accessible elevator lift and all necessary furnishings (kitchen equipment, catering supplies, etc) at a cost of \$232,000 through an 'upward amendment' to the Western Diversification funding.

### 5. Job Creation

The construction phase of the Visitor Facilities project generated over 2,360 person days of work. A detailed job performance assessment for the construction portion of the project is attached. It does not include professional services, which also employed architects, engineers, a surveyor, and an environmental consultant on a contract basis.



*Pearl Harris and Buffy David offer an opening prayer at the Opening Ceremony for the new Visitor Reception Centre*



## 6. Economic Benefit

The project was completed well in advance of the 2012 busy season, which has enabled the LMS to turn its attention to marketing activities designed to promote the newly enhanced facility.

Outlined below are the expectations for the impact of LMS marine visitors to the local economy until the end of the 2015 season. Actual visitor nights from the 2010 season are shown for comparison purposes. The numbers derived are based on industry averages of two to four people per vessel (LMS uses 2.5 people for calculations), spending \$225 per boat, per day. Using a tourism economic multiplier of 1.8 (2003 *BC Stats*) on the increased revenue from direct tourism spending in the region, the yearly total economic impact to the area is projected as follows:

	<b>Visitor Boat Nights</b>	<b>Direct Spending Impact (Annual)</b>	<b>Total Economic Impact (Annual)</b>
<i>2010</i>	<i>800</i>	<i>\$180,000</i>	<i>\$324,000 (comparison year)</i>
2012/2013	1,600	\$360,000	\$630,000
2014/2015	2,200	\$495,000	\$891,000

Evidence of the project's early success is already clear. Although the project completed mere weeks ago, confirmed bookings for the 2012 season include 5 large-scale boater rendezvous, 1 conference and 2 potential weddings. Significant benefits are also being widely lauded by businesses throughout the community, marine tourists, and visitors with mobility challenges. The project has been favourably profiled in major marine tourist publications of the Pacific NorthWest (see attached media clippings).



## Ladysmith Community Marina Visitor Facilities Project

Period: April 1, 2010 to March 31, 2012

## Project Expenditures

Visitor Reception Centre	\$1,237,793
Electrical Upgrades	365,462
Gangway/Ramp/Accessibility	420,779
Sewage Pump-out	58,531
Project Management	59,324
<b>Total Expenditures</b>	<b>\$2,141,889</b>

### Project Income (Sources of Funding)

Western Diversification	\$1,038,988
ICET	543,750
WestCCAP	250,000
Enabling Accessibility Fund	75,000
LMS	234,151

<b>Total Income (Sources of Funding)</b>	<b>\$2,141,889</b>
--	--------------------

Balance	\$0
---------	-----

In addition to the above-noted sources of funding, the Town of Ladysmith contributed in excess of \$45,000 to connect the LMS Community Marina to the Town's infrastructure (sewage, water, stairs, etc.)

I hereby certify that this statement accurately represents all project expenditures and all sources of project funding

BM Pearson

Treasurer

22 May, 2012

Date



Attachment #1  
Job Performance Assessment



**LMS Visitor Facilities Project**  
**Job Performance**

The following chart tracks employment opportunities during the construction phase of the project to date. It does not include engineering, architectural design, environmental assessment and other professional services.

**Electrical:**

<b><u>Start Mar 29<sup>th</sup> @4 men per day</u></b>	<b><u>Days</u></b>	<b><u>Man-Days</u></b>
Mar	3	12
April	20	80
May	19	<u>76</u>
		168

**Approach/Gangway:**

<b><u>Start April 4<sup>th</sup></u></b>			
April @ 4 men	19	76	
May @ 3 men	17	<u>51</u>	
		127	

**Electrical Bld:**

Foundation @ 4 men	3	12
Bricks @ 3 men	8	24
Frame roof @ 3 men	1	3
Doors / trim @2 men	1	2
Metal roof @ 2 men	1	<u>2</u>
		43

**Plumbing:**

<b><u>Start April 29<sup>th</sup></u></b>		
Pipe under elect bld @2 men	5	10
Pipe in appr / dock @3 men	5	15
Water services @1 man	1	<u>1</u>
		26

**Month of June:**

	<b><u>Days</u></b>	<b><u>Man Days</u></b>
<b><u>Electrical:</u></b>		
@ 4 men per day	22	88

**HMM:**

Finish railing & gangway@ 3 men	1	3
<b><u>Plumbing:</u></b>		
Finish pipes in visitor dock @1 man	8	8
<b><u>Electrical Bld:</u></b>		
Eves trough @2 men	1	2
Total	<u>32</u>	<u>101</u>

### **July to October**

	<u>Days</u>	<u>Man Days</u>
<b><u>Electrical:</u></b>		
@ 4 men per day	31	124
<b><u>Visitor Reception Building:</u></b>		
@ 5 men	50	250
<b><u>Plumbing:</u></b>		
Finish pipes in visitor dock @2 man	10	20
<b><u>Sewage and Water Services:</u></b>		
Town of Ladysmith install service lines @5 men	15	75
Total	<u>106</u>	<u>469</u>

### **November 1 to December 12**

	<u>Days</u>	<u>Man Days</u>
<b><u>Electrical:</u></b>		
@ 3 men per day/14 days	14	42
<b><u>Visitor Reception Building:</u></b>		
@ 8 men per day	35	280
<b><u>Plumbing:</u></b>		
Interior Plumbing @2 men/8 days	8	16
Total	<u>57</u>	<u>338</u>

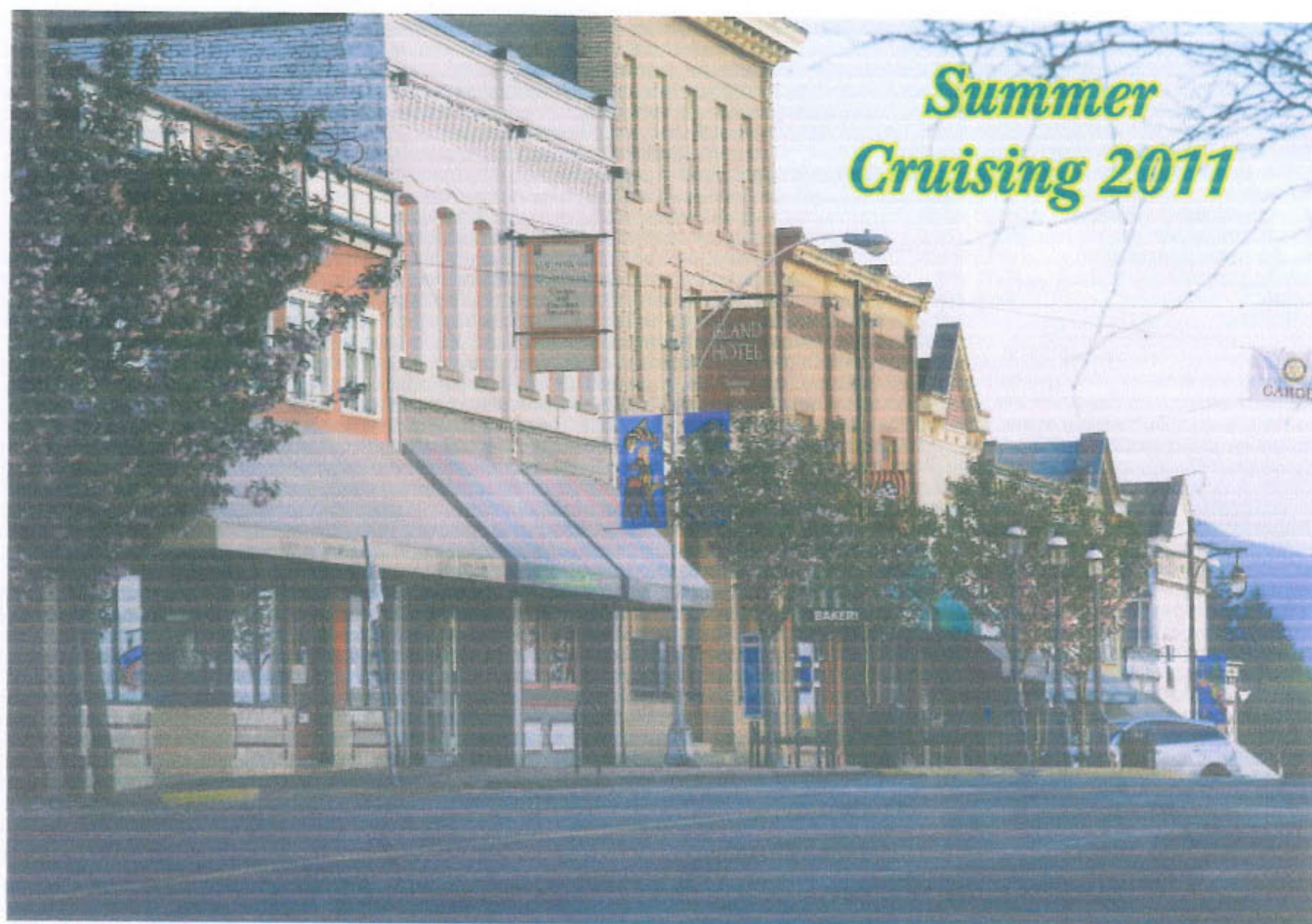
**December 12 to April 30, 2012**

	<u>Days</u>	<u>Man Days</u>
<b><u>Visitor Reception Building:</u></b>		
@ 10 men per day	85	850
<b><u>Plumbing:</u></b>		
Exterior Plumbing @2 men/20 days	20	40
Total	<u>105</u>	<u>890</u>
Grand Total		2,360





Attachment #2  
Media Clippings



# Cruising to Ladysmith

## In Search of the Best Buns in the World!

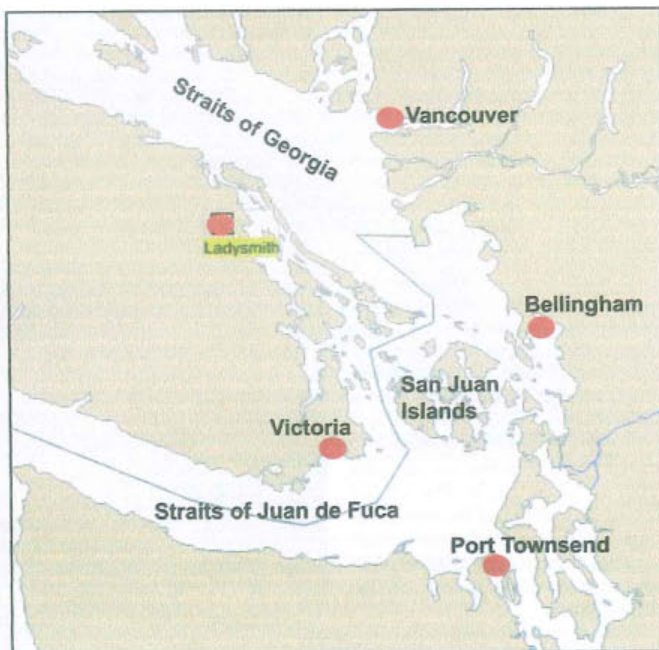
Story and Photos by  
Mark Bunzel

**L**adysmith may be one of those places you just might not have discovered yet. You have probably spent time at Telegraph Harbour, and maybe headed north to Pirates Cove, Silva Bay or even through Dodd Narrows to Nanaimo on the north end of a Gulf Islands summer cruise, going right by Ladysmith Harbour. Consider Ladysmith is only six nautical miles

*Photo above - The historic buildings of the town were moved here from other towns at the beginning of the century. The streets have appeared in a number of period movies. (Photo: Town of Ladysmith.) Photo right - At the Ladysmith Maritime Society Marina you may be docked next to a classic boat from their collection.*







Photos on this page, clockwise from above, left: Yes, the cinnamon buns and flavors are the best in the world, not just Ladysmith; the Ladysmith Maritime Society Museum is right in the marina and features exhibits that detail the heritage of boating in the area; the waterpark at Transfer Beach Park is a short walk from the marina and is a hit with kids young and old (photo: Town of Ladysmith); Owen, the butcher, at Bouma Meats has an extensive selection of steaks, buffalo meat, homemade sausage and seafood.

north of Telegraph Harbour and Chemainus, sitting right on the 49th Parallel.

Ladysmith, like many Inside Passage destinations, has gone through a transition over the last ten years. It is a working waterfront with two wood mills and log booms throughout the harbor. The marinas still serve the local fishing fleet, though more and more slips are being renovated and made ready for pleasure craft. The harbor and the town are a place worth visiting with all the attributes of a great cruising destination - great food, lots to see and do for the entire family, and a beautiful setting with friendly people. I should add they lay claim to probably "the best buns in the world" - cinnamon buns that is. And you know what - they are!

Now that I have your attention, a little history on Ladysmith. Like so many communities along the Inside Passage, its past is steeped in its natural resources, this time in coal and later lumber. The area for centuries was settled by the Stz'uminus First Nations, Coast Salish, who fished, hunted and foraged plants in this bountiful area. They numbered between 8,000 - 15,000. The first Europeans arrived in the late 1800s bringing small pox through two epidemics. Today there are only 1,500 in the tribe who can trace their past to the Stz'uminus.

The arriving settlers called the area Oyster Harbour. Coal baron James

Dunsmuir founded the town in 1898 as a place for his coal miners to live away from the mines, about 10 miles away. A rail line was established to deliver the coal from the mines to waiting ships. Dunsmuir named the town Ladysmith to honor the victorious fighting in South Africa in the Boer War. The hotel, commercial buildings and homes were literally shipped in from a neighboring town where all of its coal had been mined.





The town, like many, has gone through its booms and busts due to the depression and later when the demand for coal dropped due to ships and homes converting to oil for fuel.

A massive wind storm swept through the area in the 1930s knocking down thousands of large trees and starting a boom for the salvaged logs. The harbor became busy once again with sawmills and the shipment of lumber and logs. The waterfront was also home to a local fishing fleet, some of which remains today in the harbor's Fisherman's Wharf area. Several of the marinas are in the process of transition and the town has opened its doors to tourism for the many people who come to visit the beauty of the Cowichan Valley and the surrounding area. Ladysmith is now a boating destination worth visiting where one can enjoy the hospitality of this historic town.

Cruising to Ladysmith offers several interesting choices for moor-



*Beantime Coffee is THE town hangout with coffee fresh roasted right there in the dining room. They also feature fresh baked goods and sandwiches.*



*Photo above - The maritime museum features a collection of antique outboard motors.*

The resort and marina operations manager, Talia Hemingway, will often be the one to greet you and help you tie up your boat. Talia has a background in hotel management and her attitude is - "What can I do to make your stay more enjoyable?" Want to take a bike ride, she will arrange it. Want to rent kayaks, ditto. This is a refreshing attitude for a marina manager. Talia will give you a tour of the resort.

Up from the docks is the deck overlooking the harbor called "The Bored Room" with a chairs to relax, read a book or enjoy the barbecue area for guest use. Nearby is a small local chandlery that has all of the basics and can order other items for delivery the next day. The main building has rooms for the inn, but most notable is the Page Point Bistro which is under the capable new management of Sandy & Robert Wilkinson. The menu is strong on local ingredients including seafood from the local area and fresh steaks, sausage, chicken and vegetables from the Cowichan Valley. The menu shows a lot of creativity and you can could probably visit several nights and enjoy a different and wonderful dinner overlooking the harbor and Ladysmith.

On the south side of the harbor and across from the Page Point Marina is the Ladysmith Marina, now owned by the Oak Bay Marine Group. This was formerly Ivy Green Marina and has gone through a \$6 million transformation over the last three years with new docks, boat houses and a sophisticated new electrical system for the docks. Note - most of the cruising guides, charts and electronic charting all show the docks in the old configuration. Guest moorage is on the east side of the marina along a long linear dock with the entrance on the side of the

age with a marina resort and two marinas for recreational boats. For those who prefer to be on the hook - there are several anchorage spots a short dinghy ride from town in the protected harbor. On the north side of the harbor entrance you can anchor in cozy Sibell Bay within sight of the private dock for the Seattle Yacht Club outstation (no reciprocal privileges). You can also cruise deeper into the bay past the Page Point Marina and anchor, still a short dinghy ride to one of several dinghy docks and pathways that lead to town.

There are three choices for guest moorage at marinas. On the north side and past the town is the Page Point Marina resort. This pleasant setting looks back across the harbor towards Ladysmith in a forested setting that just feels relaxing. Their slogan sums it up - Sail, Dine, Relax.



Marine Supplies Since 1952



fisheriessupply.com • 206/872-4462  
1507 N. Northgate Way, Seattle, WA 98105

## LEWMAR® HAS IT ALL!

bow thrusters • windlasses  
blocks • winches • portlights  
hatches • anchors • travelers  
**Whatever you need!**

## 20% OFF

All Lewmar products during July!





Ladysmith Yacht Club.

The Ladysmith Marina will also place guests in unoccupied slips in the marina. According to marina manager Rob Waters, they will work hard to accommodate all of their visiting guests. Town is walking distance and there is a wooded bike and walking path along the waterfront. There are big plans for this marina to make it a premier destination in the area. The Nanaimo airport is only a few miles away and many out of town boat owners are using this marina as their new home port, right in the heart of the Gulf Islands.

The first marina you pass when entering the harbor, just behind Slag Point, is the Ladysmith Maritime Society Marina. The linear dock is decorated with flower baskets, colorful banners and a tented meeting and barbecue area with inviting adirondack chairs for relaxing. Classic wood boats are often tied up in the marina for display with interpretive signs on the dock. One of the classic boats offers harbor tours during July and August with volunteer guides that will tell you all about the history of Ladysmith while cruising along the waterfront.

The Ladysmith Maritime Society marine museum is located both down at the docks in several blue floating buildings and up the hill in the large blue building. The marina offers power and wireless internet on the docks. For next season, a new and impressive floating visitors center is under construction that will add to the experience of this historic community marina. This marina with personality can sometimes fill up with guests and rendezvous. It may be best to call the marina manager, Mark Mercer, for reservations.

When you arrive, look around at the pilings in the Maritime Society marina and you will see bird houses. A local group determined that they would work to restore the Purple Martins that once lived in this area before it was used for local industry. Today, the bird houses are alive as the Purple Martins dart about and provide a concert at sunset, and yes at sunrise! It really is quite entertaining to wake up to the sounds of the Purple Martins in a full symphony.

Walk up the hill from the dock and the big blue building, the Ladysmith Waterfront Arts Centre, houses space for artists, galleries and additional exhibit space for the Maritime Society. They have a fascinating display of antique outboard motors and exhibits that describe the maritime history of the area.

In front of the Waterfront Arts Centre is a trail that leads to Transfer Beach Park in one direction and the Ladysmith Marina in the other. More on Transfer Beach Park later.

Continue on the road past the

## Your Cruising Headquarters

Since 1982

- ✓ **FULL SERVICE REPAIRS**
  - Fine Wood and Fiberglass Repair
  - Expert Painting and Refinishing • Preventative Maintenance
- ✓ **HEATING/REFRIGERATION**
  - The Installation Experts • Espar/Webasto
  - Isotherm/Indel • All Brands Serviced
- ✓ **CUSTOM METAL FABRICATION**
  - Pulpits • Bow Rollers • Equipment Mounts
- ✓ **ELECTRICAL/ELECTRONICS**
  - Service on all Brands • Custom System Design



**MILLER & MILLER BOATYARD**

2700 W. Commodore Way • Seattle "Just inside the locks"

(206) 285-5958

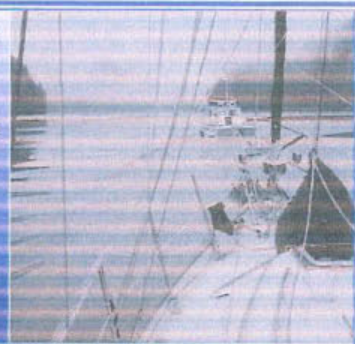
www.mmbboatyard.com



Isotherm GARMIN

ESPEC

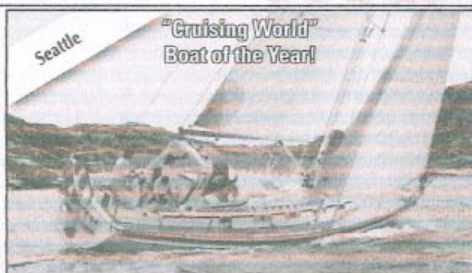
Webasto



## DISCOVERY YACHTS



47° 37' 59" North - 122° 20' 25" West



### MALÖ - "The Other Swedish Yacht!"

A new MALÖ 40 has arrived and is available for viewing. Please call for an appointment to inspect this yacht! See first-hand the onboard storage, quality and craftsmanship that is turning heads nationwide. Offered at 37' to 54' with four transom styles.

For more information on new or brokerage Malö Yachts visit [www.discoveryyachts.net](http://www.discoveryyachts.net) or give us a call

### 2002 SUNNFJORD 49 PH - INQUIRE!!!

The ultimate Inside Passage economical & incredibly sturdy cruiser. Hull designed by Ed Monk & built by Sunnfjord of commercial fishing boat fame. "Winship" is fully outfitted for safe, comfortable & extended cruising. Custom built for the present owners. Recent price reduction plus a generous allowance to re-decorate the interior to suit.

More information at [www.discoveryyachts.net](http://www.discoveryyachts.net)



1995 Able Apogee 50 \$395,000



1991 Wauqueiz Cent. 49 \$249,500



1988 Peterson 46 CC \$179,000



2005 Malö Classic 45 \$696,500



1984 Norseman 447CC SOLD



1991 Wauqueiz Cent. 42 \$141,000



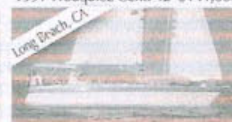
1999 Cabo Rico NE 400 \$249,000



1970 Hinkley 40 \$225,000



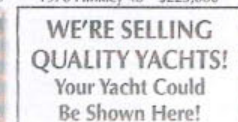
2002 Malö 39 CALL



1982 Wauqueiz 38 MKII SOLD



1983 Wauqueiz 35 \$87,500



1981 C&C 32 \$32,450



1984 Wauqueiz 33 \$47,900



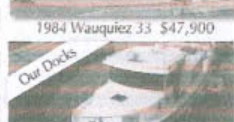
1981 Wauqueiz 33 \$64,900



1983 Sunnfjord 38 SOLD



1999 Linssen 320 \$148,900



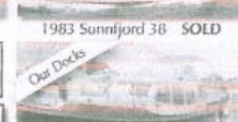
1997 Nordic Tug 32 \$179,500



1982 Wauqueiz 38 MKII SOLD



1983 Sunnfjord 38 SOLD



1999 Linssen 320 \$148,900

**WE'RE SELLING  
QUALITY YACHTS!  
Your Yacht Could  
Be Shown Here!**

**Our Docks are open 7 Days a week - Stop By!  
Listings needed - call for Free Appraisal!**

'82 Wauqueiz 33 \$63,500 '84 Malö 38.....\$200,000 '03 Malö 43C .....CALL  
'07 Malö 37 .....SOLD '85 Wauqueiz 38 .....SOLD '82 Nautical 52 .....SOLD

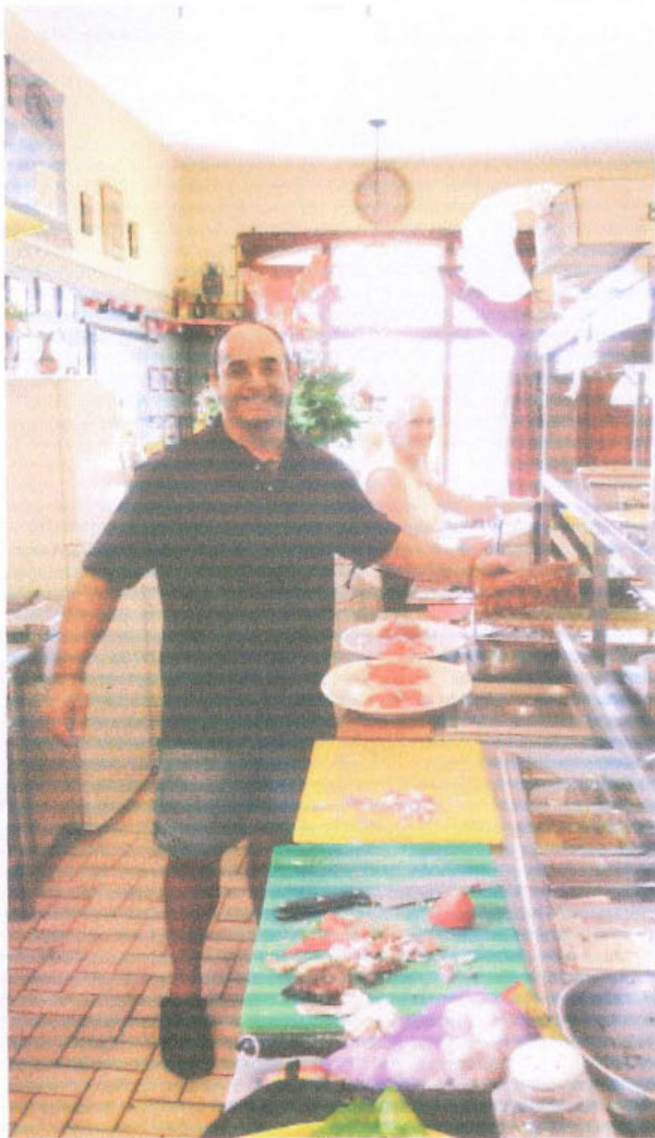
More information at [www.discoveryyachts.net](http://www.discoveryyachts.net)



Dealers for: Malö - Regina af Vindö - Farr Cruising Yachts - Passport

Phone: 206.301.9104 - 1500 Westlake Ave. N. - Suite 102 - Seattle, WA 98109 - Fax: 206.301.9291





Mark Bunzel is the new Editor and Publisher for next years 2012 Waggoner Cruising Guide. He is spending this summer on the water cruising and writing about the area between Olympia and Ketchikan for updates for the cruising community in his Albin 27 pocket trawler, *Sea Raven*. He swears he personally tests any food or beverage item he writes about!



Waterfront Arts Centre and up the hill to the town. It is a vigorous walk uphill, but well worth the exercise. Turn right onto 1st Avenue, the main street with shops, restaurants and the information center. If you would like, stop by the Chamber of Commerce Information Centre and pick up the free maps for the the local hiking trail system describing six different trails. There is also a map for the Heritage Route - describing the col-

lection of of antique machinery, pumps, clocks and boom boats on display throughout the town from its industrial era. Or, you can pick up a map that shows the location and history of all of the historic buildings in town. The town looks like a movie set and has been used as such in several movies.

On 1st Avenue, stop in at Bouma Meats for a meat market the old fashioned way with Paul or Owen as the butchers. In addition to meat they have local fresh caught seafood and their homemade sausages! Do you like Buffalo or steaks cuts cut a special way for cooking on board? Just ask.

The street has an assortment of pleasant bargain, consignment and book shops for browsing - but the place revered by both visitors and locals alike is the Old Town Bakery with the "best buns in Ladysmith." Yes, they are! They offer not just cinnamon buns but multiple varieties and flavors of buns, scones, cookies, cakes and fresh bread. Luckily you can sit down inside or out to enjoy the bakery with coffee as some purchases never make it out of the store!

Once you tear yourself away from the Bakery you can peruse the book store or the discount store. Around the corner on High Street is the In the Beantime Cafe, another local favorite with plenty of seating area inside and out to enjoy their coffee roasted right there in front of you. They also offer their own fresh bakery and sandwiches. Another stop could be Renee's Soup and Sandwich - well known in the area for their cheesecake.

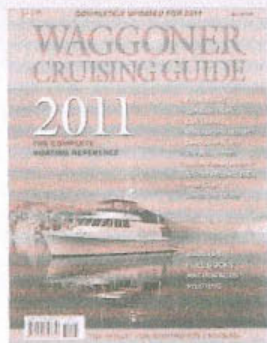
Food is still the topic, but now with a purpose. Continue down 1st Avenue for several blocks to the 49th Parallel Grocery for provisions. No worries about carting your purchases back to the boat. The store will drive you, your crew and groceries back to the boat. There is also a liquor store next to the grocery store.

In case you still want to explore the town some more, you can always jump on the brightly colored red trolley that circles the town throughout the day. A donation of \$1 is suggested. The trolley even stops at the Ladysmith Maritime Society Marina if you want to avoid the walk into town and it can take you to the nearby Coronation Mall for even more shopping. A new

Photo left - Georgios at the Transfer Beach Grill preparing fresh salmon, Greek style. His wife Anne in the background preparing a calamari with his Tzatziki. Photo below - The Transfer Beach Grill prepares fresh salmon, Greek style.



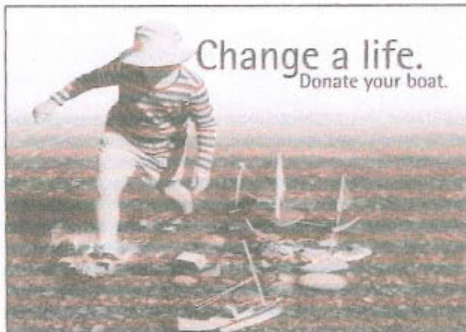
## Required Local Knowledge



For the most up to date information for Northwest cruising, equip your boat with the 2011 Waggoner Cruising Guide.

Available at Fisheries Supply, Captain's Nautical, Armchair Sailor, West Marine and your favorite nautical bookstore and chandlery, or [www.fineedge.com](http://www.fineedge.com). 360-299-8500.

**FINE EDGE**  
Nautical & Recreational Publishing



Change a life.  
Donate your boat.

Support local and regional programs for children and young adults through the charitable donation of your boat.

The Pacific Marine Foundation is a 501(c)(3) non-profit organization funding regional programs such as Northwest Youth Services, Sea Scouts, Boys & Girls Clubs, and local public school education foundations. A substantial tax savings and the possibility of a partial cash sale makes a charitable donation a very attractive alternative for any owner who is considering selling their well-found power or sailing yacht.



**PACIFIC MARINE**  
FOUNDATION  
[888] 443-8262  
[www.pacificmarine.org](http://www.pacificmarine.org)



chandlery, Ocean Marine Center, has just opened up this year near the hardware store and is walking distance from the marinas.

One of the crown jewels of Ladysmith is Transfer Beach Park. You will notice the park on the south shoreline when you first enter the harbor. You can't miss it as Ladysmith is spelled out in topiary as a welcome to the town. You will also see the racks of colorful kayaks available for rent. Ladysmith is known as a kayak center and is the site of the large BC Paddlefest held in mid-May every year. But, in addition to being a beautiful park, the kids have access to a large water park area. Kids, grandchildren and the big kid in you will like running through the spraying water fountains to stay cool on those sunny Vancouver Island days.

After a long day or two of enjoying all Ladysmith has to offer, you may not want to cook on-board. The closest restaurant to the Marine Society Marina is the Transfer Beach Grill, located just up from the marina on the Esplanade (the highway also noted as the Trans-Canada Highway) which you crossed on your way into town. The Transfer Beach Grill is one of those small restaurants where your gut just says - this is going to be good. It is a family affair with Greek chef and proprietor Georgios Manning the open kitchen and his wife Anne or the kids seating and serving guests. While the building is cozy with seating at only eight tables, on sunny days you can enjoy dinner in the courtyard with tables and brightly colored umbrellas.

Georgios works with a number of family recipes from his days of growing up and cooking in the Greek islands now using fresh local ingredients. The menu is a fusion of Greek favorites and local fare. Fresh salmon is prepared Georgios way - seared in Greek extra virgin olive oil with subtle spices. His Tzatziki is a classic, thick from being strained 12 times and laced with his specially prepared garlic. His gyros are made with thick pieces of lamb, chicken or pork. Salmon or halibut are prepared to perfection with your choice of battered, baked or grilled. Check out his variation for Mezethes (Greek tapas) - a tasting menu of many different items, economically priced, which could become your entire meal. Come hungry and prepare to take some home for lunch the next day. On weekends, leave room for Georgios special Baklava made with Greek honey. Reservations are recommended and you can view their menu at [www.transferbeachgrill.com](http://www.transferbeachgrill.com).

Ladysmith offers history, friendly people, and so much to see and do, with the added bonus of incredible food for enjoying there or for cooking onboard. Make this a "must-see" stop on your next Gulf Islands cruise. *HWY*



## Marine Servicer

Lake Union - Sales  
2442 Westlake Ave. N.  
(206) 323-2405

Anacortes - Sales & Service  
2417 "T" Ave.  
(360) 293-8200

www.marinesc.com • Serving Northwest Boaters Since 1977 • info@marinesc.com



365 • NEW! 395  
435 • 525

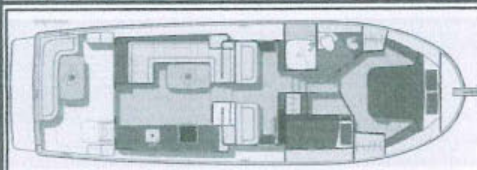
### All-New American Tug 395

2 cabin with Signature Full Size Head/Shower!

Hull #1 & #2 SOLD! - Hull #3 Ready January!



Fast, Stable, Quiet, Comfortable



- Power S/Cummins QSB380
- LOA 41'6"
- LWL 37'
- BEAM 13'5"
- Draft 3.5'
- DISP (dry) 21,000 lbs
- DISP (wet) S/Cummins QSB380
- Fuel 400 US Gal.
- Range 1000nm approx.\*
- Water 150 US Gal.
- Waste 60 US Gal.
- Sleeps 7 (incl. conv. settee)

2012 AT395 #003  
**INTRODUCTORY PRICE**  
**\$524,485**  
Well Equipped!  
US Built!



All New  
AT 365



2 Sold  
AT 435



New  
AT 525

We are Building NEW AMERICAN TUGS! Customized to YOUR taste, with your colors & features. Order YOURS TODAY!



2009 American Tug 34 \$398,900



2003 American Tug 34 \$267,500



2007 American Tug 41 \$675,000



1983 Nordic Tug 26 \$84,500

#### ADDITIONAL POWER LISTINGS

34' AMERICAN TUG 34 '04 SOLD  
34' AMERICAN TUG 34 '01 SOLD  
31' TONGUE 31 '09 SOLD

#### SAIL LISTINGS

40' NELSON MARX 68 '04 Reduced 749,500  
64' ROBERTS PH '08 "Ocean Wind" SOLD  
56' WILSON HANS SCHROEDER '05 Reduced 349,500

52' NAUTICA 52 '03 849,995  
50' NAUTICA 50 '04 SOLD  
49' JEANNEAU 49 '07 Reduced 399,500

40' RUMPLEDIP '75 129,500  
47' COBURN 47 '09 189,500  
46' BENEDEAU 46 '07 339,500

46' JEANNEAU 504S 2 '01 Reduced \$20K 169,500  
46' JEANNEAU 504S 2 '03 Reduced \$21K 149,900

45' HUNTER PASSAGE 450 '02 SOLD  
44' CUSTOM Center spread ketch '95 New Listing 194,500

44' NAUTICA 44 '05 Reduced 184,500  
44' NAUTICA 44 '04 New Listing 274,500

43' JEANNEAU 430S '03 Reduced 234,500  
43' JEANNEAU 430S '01 169,500

42' NAUTICA 42 '03 239,500  
42' CALUNA 42 '01 New Listing 189,900

42' WINCKLEY 42 PH '04 New Listing 224,500  
42' NAUTICA PH 42 '02 Reduced \$45K 449,500

41' SCORPER 41 PH '90 Reduced \$59K 199,900  
41' 140 36 Reduced \$59K 179,900

40' CEC 37 '90 Reduced 109,500  
40' ISLANDER/PETERSON '79 SOLD

39' SAIBEN 39 '01 New Listing 249,500  
39' CUK 29 '72 39,500

39' DEWEY 39 '03 Reduced 279,500  
39' JEANNEAU 39 '08 Reduced 199,500

38' JEANNEAU 38 '07 72,500  
38' HUNTER 38 '07 Reduced 169,900

38' HUNTER 38 '06 159,000  
38' CATHARINA 38 '08 Reduced 209,500

#### NEW BOATS

32'5" AMERICAN TUG 32S '12 #003 Summer '12 199,500  
43.5' AMERICAN TUG 43S '11 #001 & #002 2 SOLD

43.5' AMERICAN TUG 43S '11 #003 Winter '12 679,000  
39.5' AMERICAN TUG 39S '11 #001 & #002 2 SOLD

39.5' AMERICAN TUG 39S '12 #003 Ready Jan 524,485  
36.5' AMERICAN TUG 36S '11 #002 SOLD

36.5' AMERICAN TUG 36S '12 #003 Ready Feb 339,000  
50' JEANNEAU 50 DS '11 Hurd Save \$49,850 339,918

42' JEANNEAU 42 DS '11 2 SOLD  
40' JEANNEAU 40 '11 Just Arrived 225,933

39' HUNTER 39 '11 \$43,401 Savings! 209,874  
38' HUNTER 38 '12 Just Arrived 187,436

27' HUNTER 27 ELECTRONIC '11 Zero Emotional 89,785  
27' HUNTER TRAVELER '11 \$2,737 Savings! 84,163

45' TARTAN 4500 '10 SOLD, Come See!  
38' CEC 115 '08 SOLD

38' SEWARD 1140 CATHARINA '11 2 SOLD, Come See!  
20' LASER 38 '08 CLEARANCE SALE \$7,100



2001 Lindell 38 \$199,500



1985 Chris Craft 48 \$175,000



1990 Prowler 35 AC \$59,500



2007 Ranger Tug 25 \$125,000



NEW 2011 Jeanneau 50 Deck Salon - \$339,916



NEW 2011 Hunter 39 - \$209,874



NEW DEALERS! L380, L400, L421, L450, L500, L560, L620

Huge Selection of New & Used Boats at our Westlake Sales Dock & Anacortes Dry Lot - A Boat Show Every Day!



# OLD WORLD CHARM

Visiting **LADYSMITH** on the east coast of Vancouver Island is a history lesson in itself, and the local food, shopping and picturesque waterfront make it a must-stop for boaters looking for an off-the-water break

BY  
ANNE  
AND  
LAURENCE  
YEADON-JONES

## In the early

summer of 2010, *Dreamspeaker* and her crew spent two sunny weeks in the Gulf Islands, hopping from one beautiful anchorage to the next. There comes a time however, when both Laurence and I feel an overwhelming desire for terra firma and a good hot shower. The previous year we had rediscovered the Town of Ladysmith on the east coast of Vancouver Island as a favourable new boating destination, so sampling a few restaurants and cafés, and exploring the shops and galleries of a historic small town for a day or two, seemed like a splendid idea.

■ **THE TOWN OF LADYSMITH**  
Exiting Sasum Narrows, Laurence pointed *Dreamspeaker*'s bow north into Stuart Channel and headed for the Port of Ladysmith. Straddling the 49th Parallel and approximately 2 miles from Slag Point to the shallows at its head, this is still a working harbour with multiple log booms being manoeuvred daily by nifty mini-tugs. Perched on a steep escarpment, the picturesque town overlooks the harbour with magnificent views to the nearby Gulf Islands.

The Town of Ladysmith is proud of its mining, logging and maritime heritage, and in 2004 celebrated its first century of incorporation and downtown revitalization. In 2010 the colourful storefronts that line the main street were freshly painted for the Olympic Torch Relay and traditional-looking red trolley buses run a regular public service. With the recently upgraded harbour

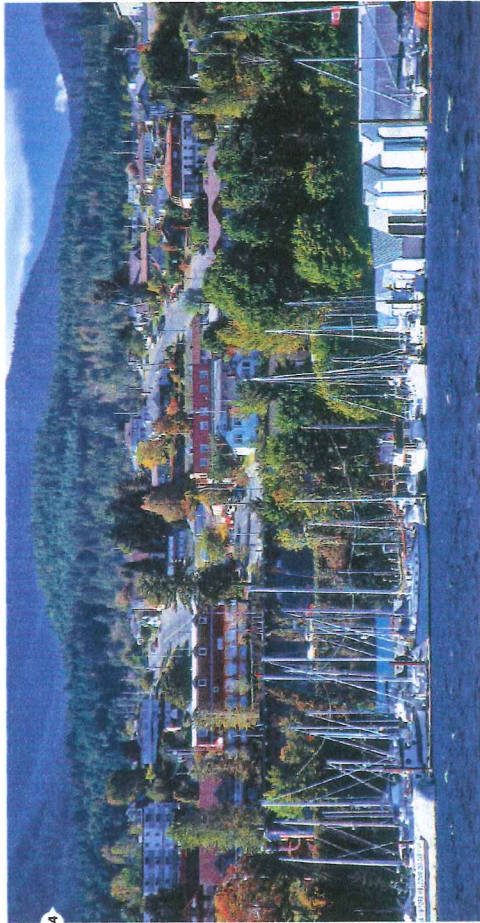




facilities and the expansion of the Maritime Community Marina to include a floating visitor centre due to open in September 2011, the town welcomes cruising boaters to stay a while and enjoy its hospitality and preserved old-world charm.

■ **BY THE WATER** Calling ahead to secure a berth at the well-maintained Ladysmith Community Marina, we were met by the friendly wharf manager who brought us up to date with community news and events. Within the maritime complex you can visit the award-winning floating museum and volunteer-restored heritage boats. A tented picnic and barbecue area filled with flowers, an intertidal viewing pool and well-placed teak "lounging chairs" are perfect for a happy hour get-together or boating rendezvous. The marina now creates a convenient link from the harbour waterfront to the inviting small town with its turn-of-the-century architecture, inviting shop fronts and excellent amenities.

The Waterfront Trail (just up from the Maritime Marina dock) leads west to Fisherman's Wharf and Ladysmith Marina, and east to Slag Point and the green, shady lawns of Transfer Beach Park. This is a family-friendly spot with a waterpark, volleyball nets, kayak rental and



## WITH THE RECENTLY UPGRADED HARBOUR FACILITIES AND A FLOATING VISITOR CENTRE DUE TO OPEN IN SEPTEMBER, THE TOWN WELCOMES BOATERS TO STAY A WHILE.

an off-leash dog park. On a sunny day, stretch out on a large blanket under the cool of a willow tree, read a book, nibble on a picnic lunch and take a refreshing swim in the sun and sand-warmed waters of the harbour. The park's unique seaside amphitheatre hosts excellent Sunday night concerts and is a popular venue for summer weddings, which adds a touch of romance to the day.

■ **IN TOWN** For an energetic walk into town or to board the scheduled trolley bus (which also stops at the Coronation Mall during its circular route), pick up a map and trolley schedule from the wharf manager's office and take the timber-stepped trail from the marina car park past the Waterfront Art Gallery (worth a visit and filled with local artists), and across the railway tracks to Ladysmith's pocket-sized station and Waterfront trolley stop. The E & R Dayliner to Victoria and Courtenay stops here by request! The lights at the main highway have to be navigated before reaching Roberts Street and the uphill hike to First Street. If provisioning at a supermarket is at the top of your list, head down to the 49th Parallel Grocery on Warren Street and stock up—they will deliver you and your bags back to the marina.

We began our morning with good coffee, fresh pastries and the daily papers at bustling in the Beantime Café; they win hands down for the longest chalkboard list of scrumptious fare and blended beverages. During the week you will see regular clientele working on their laptops, conducting business meetings, or lounging on the comfy sofas just chatting and reading; weekends are for the whole family.

■ **SHOPS, GALLERIES AND GOURMET TREATS** The next few hours were spent popping in and out of the one-of-a-kind

shops and galleries while following the Ladysmith Heritage Artefact Route (pick up a map at the friendly Chamber of Commerce desk). These preserved pieces of historic industrial machinery when Ladysmith was a mining, logging and busy port town have been carefully restored and painted, and are now on display along the downtown streets—one of our favourites being the Knight's Clock on First Avenue and the Fairbanks water pump below City Hall.

Shopping on First Street is my "cup of tea," with no big box stores, just interesting, individual shops with a good few finds in every one—even at the local thrift store. Nancy's had a great sale on their spring merchandise, which they displayed with panache, and I coveted an elegant straw hat to add to my collection. A few shops down, The Top Drawer's eye-catching window display pulled me in instantly—they arrange their eclectic selection of consignment clothing by style, size and colour, which made it easy for me to find an extra-small tank top in orange! They also carry a colour-coded selection of hats, bags and bangles.

The Worldly Gourmet carries quality kitchen tools and unusual European gadgets, and it's hard to leave without something useful tucked into your bag. For something completely different visit Mc Frugals, stocked from floor to ceiling with hardware, gifts and



anything you think you might or might not need. As the name implies, this emporium is filled with bargains! Don't miss a visit to the friendly Salamander's Bookstore where we found many gently used and out of print editions.

Boma Meats Butcher Shop is a must-visit. After 50 years in business, customers will travel from all parts of the island to stock up on their homemade sausages, buffalo being a new favourite. They also carry locally made meat pies and Cornish pasties—perfect picnic treats. For dessert, nip into the Old Town Bakery for sticky cinnamon buns to go.

The bakery carries more than just buns and is a lunchtime favourite. Service is fast and efficient, and the small store is filled with hungry-making aromas. Customers line up outside the door while others squeeze around the café tables to enjoy a well-filled sandwich and bowl of homemade soup.

Before retiring to Dreamspeaker at the Community Marina that evening, we treated ourselves to a cozy meal at the locally renowned and family-owned Transfer Beach Grill on Esplanade. Georgios, the passionate owner and chef prepares food made from scratch with fresh, seasonal ingredients. His favourite southern Greek Island dishes are directly influenced by his grandparents who used the

- [1] Ladysmith's Victorian-era architecture has a distinct charm.
- [2] There's a great variety of treats at the Printindoun Beanery.
- [3] Stop for some good java at the Beantime Café.
- [4] Approaching Ladysmith Maritime Society Community Marina.

### FUN PLACES TO VISIT

- Antique Addict** A place for finds; Post Office Antique Mall
- Bayview Framing & Art** Excellent art and quality framing
- Black Door Decor** Experience the lifestyle and comprehensive health and wellness concept
- Ladysmith Health Food Store** A comprehensive health and wellness concept
- Nancy's Fashion & Furnishings** For the way you live now
- Salamander Books** New, gently used and out of print books
- Sweet Pea Quilting** A selection of top designer fabrics
- The Top Drawer** Where fashion only looks expensive
- The Worldly Gourmet** Kitchen tools and gourmet foods
- Kiwi Cove Lodge** A peaceful retreat nestled just off the beaten track

LAURENCE YEADON-JONES X4



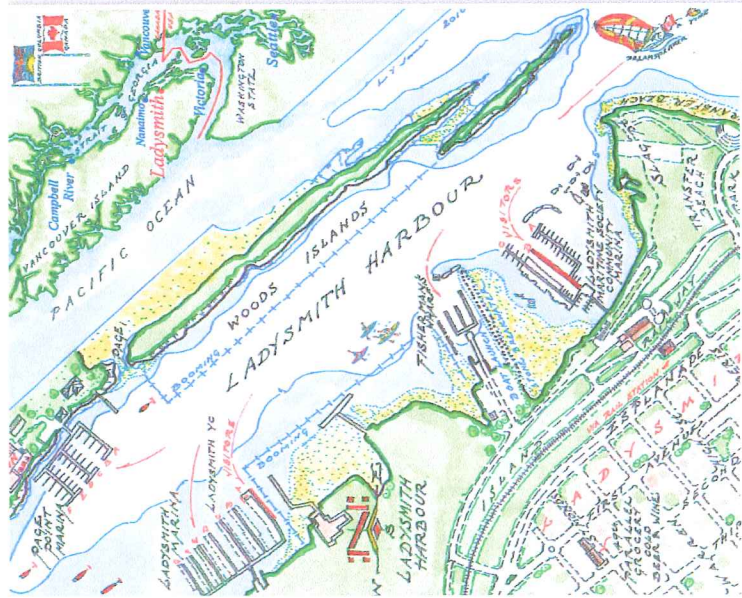
plethora of fresh island seafood and farm produce to create simple, tasty dishes. We weren't disappointed, and completed our piled-high seafood platter with fresh Baklava drenched in Greek honey.

**■ A DAY IN THE HARBOUR** The following morning a blustery northwesterly kicked up whitecaps in the harbour, but the clear blue skies and sunshine made it the perfect day for a Harbour Tour aboard the *Maritimer*, a restored deep-sea lifeboat with a bright blue awning. Snug in our red PFDs and well balanced with five a side, our volunteer captain took the wheel, turned our study boat into the waves and guided us on a scenic and informative tour of the harbour and its islands. He was chatty, friendly and funny, and well-versed in Ladysmith's maritime history and the antics of the local wildlife—harbour seals, bald eagles and osprey catchers to name a few.

After an hour at sea we were all ready for lunch on the patio deck of Page Point Marina. Under sludy umbrellas with a glass of something cool in hand, I savoured their signature seafood chowder filled with chunks of halibut, salmon and potato, and topped with clams, mussels and scallops—a meal in a bowl. Laurence couldn't resist their very fresh halibut (brought in from a local fish boat that morning) and hot, homemade chips. From his contented smile I knew they had been given a gold star.



**THE WIND HAD DROPPED** and our trip back to the marina was smooth. Laurence and I packed our small overnight bag and with secure moorage at the Maritime Marina visitor dock, we checked *Dreamspeller's* lines before heading off to a local lodge for a little rest and relaxation—the perfect end to our trip to Ladysmith. ☺



## IF YOU GO

### HARBOUR FACILITIES

- Ladysmith Maritime Society Community Marina**  
250-245-1146, VHF 66A  
• Designated visitor dock with power and water  
• Wharf manager available 7 days a week in the summer months  
• Shower and laundry facilities  
• Wireless Internet  
• Kid-sized PFDs on loan  
• Endangered Purple Martin nest-cam  
• Heritage Boats and Museum  
• Harbour and Maritime Museum tours—fun for the whole family  
• Scheduled trolley bus route

- Ladysmith Fisherman's Wharf**  
250-245-7511, VHF 66A  
• Commercial fishing vessels have priority—call ahead  
• New breakwater for better protection  
• Power on the docks  
• Washrooms and showers  
• Launch ramp

- Ladysmith Marina**  
250-245-4521, VHF 66A  
[www.ladysmithmarina.com](http://www.ladysmithmarina.com)  
• Some visitor moorage available—call ahead  
• Power and water on the docks  
• Broadband Express wireless Internet  
• Scheduled trolley bus route

- Page Point Marina**  
250-245-2312  
[www.pagepointmarina.com](http://www.pagepointmarina.com)  
• Some visitor moorage available—call ahead  
• Power and water and Wi-Fi on the docks  
• Shower and laundry facilities  
• Page Point Bistro and Patio for lunch and supper

### EATERIES

- In the Beantime Café**  
High Street; Open 7 days a week  
**Page Point Bistro**  
Casual, West Coast dining; lunch and supper; 1-877-860-6866  
**Royal Dar**  
Authentic Indian cuisine; 250-245-0168, [www.royaldar.ca](http://www.royaldar.ca)  
**Transfer Beach Grill**  
Fresh food made from scratch with passion; 250-245-1211, Esplanade, [www.transferbeachgrill.com](http://www.transferbeachgrill.com)  
**The Printing Dun Beanyery & Patio**  
A delight for lunch on the patio; 250-245-7671

# Your Passion. Our Knowledge.

*Make the most of both with  
the best marine insurance.*



Your Advantage flows from Our Insurance. HUB LifeLine Yacht Insurance policies are second to none, backed by the best providers in the business. Yet the needs and priorities of yacht owners and those who love boating may vary from individual to individual. That is why it is important to judge your marine insurance on what you get, not necessarily what you pay.

We believe the right solution for you will come from matching your passion with Our Knowledge.

Working with our Marine Team specialists at HUB International, you are sure to receive the best coverage, value and service. Our Insurance is backed by the best providers in the business. We offer the widest range of available products, featuring our own HUB LifeLine series of yacht insurance products.

Your Advantage does not end there. Our People deliver on service that is second to none. When you need us most we put our experience to work to serve you. At the time of a claim we are available 24/7. It is Our Knowledge that makes the difference in protecting you fully when something goes wrong and you need immediate attention and care.

There are many marine insurance options available to you. Few are built on the kind of understanding that our Marine Team has about yachting. That understanding has created our LifeLine Affinity Card program, which delivers savings and special benefits from key stakeholders in the Marine Industry. It delivers value added benefits that will save on operational costs. Visit [www.HUBLIFELINE.com](http://www.HUBLIFELINE.com) for more details.

Add it all up and it will bring you to HUB International. Speak to a HUB International Marine Practice specialist today. Together, we'll chart the right course and make sure you make the most of your passion and Our Knowledge to get what you need.



HUB International | HUB Barton | HUB TOS

#301 - 935 Marine Dr (Capilano Mall), North Vancouver  
T. 604.980.B0AT (2628) E. [hub.boat@hubinternational.com](mailto:hub.boat@hubinternational.com)

[www.hublifeline.com](http://www.hublifeline.com)



Attachment #3  
Boater Rendezvous Promotional Brochure



# LADYSMITH MARITIME SOCIETY

## PRE BOOKING FOR RENDEZVOUS PARTICIPANTS

Ladysmith Maritime Society (LMS) is pleased you have chosen **LMS Community Marina** for your Rendezvous. To make your Ladysmith visit even more enjoyable, we have partnered with several local organizations offering activities with special discounts

*(for your discount you need to book these activities when you contact the mariner for your rendezvous )*

### LOCATION

We are located in Ladysmith harbour, Vancouver Island, BC - in the heart of the Gulf Islands. We are the first marina on your port side after you enter the harbour.

### TRANSIT

We are located convenient to the town center, the railway station and the local transit system - *the Ladysmith trolley*, which stops just steps away from our marina for rapid transportation round Ladysmith.

### GENERAL INFORMATION

There are walking trails along the water leading to Transfer Beach with beachcombing, kayaking, picnicking, swimming, playground and an off-leash dog park. Summertime brings a concession stand and concerts in the parks' outdoor amphitheatre.

### HISTORY

Ladysmith has a proud and interesting maritime history, and the Ladysmith Maritime Society is committed to capturing and sharing that history with our community and visitors. When the Ladysmith Maritime Society was established in 1985, one of its stated goals was to build a maritime museum. Today that dream is a reality. In fact, in 2008, we became an award-winning museum!

### THE MARINA

When you visit our docks you will see two large blue boat sheds near the ramp. The outer shed houses two of our restored heritage boats, *Saravan* and *C.A. Kirkegaard*. The other is our floating museum.

### HARBOUR TOURS

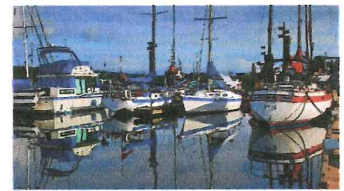
The Ladysmith Maritime Society is pleased to offer harbour tours during the summer months in our restored lifeboat, the *Maritimer*. Over the past few years, thousands of people have enjoyed a two-hour cruise through the area's history, viewing eagles, seals, cormorants, starfish, jellyfish and other wildlife along the way. Tours in July and August are at 10:30 am and 2:00 pm daily.

Ladysmith Harbour is one of nesting locations for the recovery of the endangered Western Purple Martins. The martin colony on our docks is the largest one on Vancouver Island. The birds and their nestlings can be conveniently observed using our on-site "nest-cam" during the nesting season.



These are just a few highlights of the many enjoyable things to see and do while at **LMS Community Marina**. We look forward to meeting you when you come to visit us. Read on for the special packages we have arranged for you to choose from while here.

### PACKAGES



*Harbour Tours & Lunch  
(choose from 8 different  
lunch locations)*

*Guided Kayak Tours 2 to 4hr  
Beach Tours.*

*Stz'uminus first nations  
cultural tour, paddle accros  
the harbour and have  
lunch.*

*Island Estuary - Wine Tour +  
Appetizers*

*Guided Holland Trail Walk*

*Breakfast cooking class*

*Wildplay theme park - high  
ropes course, zip line,  
kingswing and bungee  
jump.*



# HARBOUR TOUR AND LUNCH

## Harbour Tour



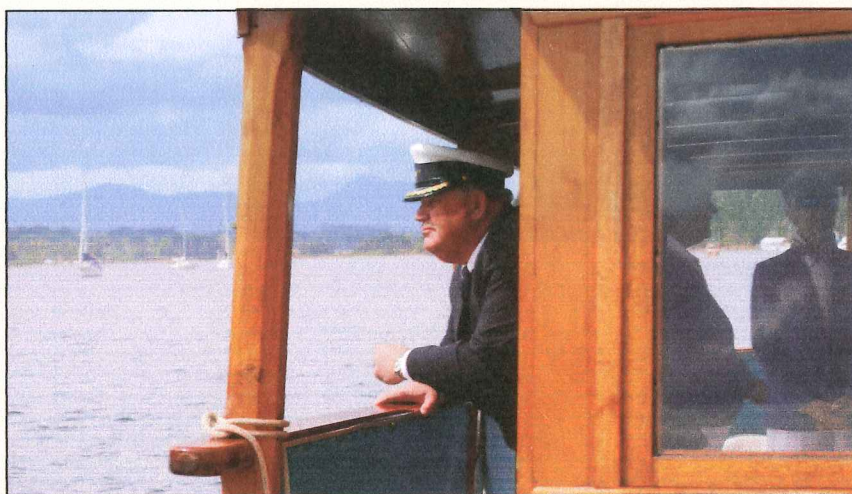
*Thank you so much for your wonderful harbour tour. Our guide was excellent! We enjoyed it very much. The restaurant was first rate. We are locals and it was a great way to see a part of our hometown we've never experienced before. We'll be telling all our friends to make sure to sign up.*

## LUNCH

Come and join us at some of the local eating establishments. There are some fantastic local pubs and places to eat. Some of these need to be pre booked before you do the tour to avoid disappointment.



Columbo's  
Island Estuary  
The Bean Time  
K&S Diner  
Printingdun Beanery  
Olivers Pizza's  
Old Town Bakery



## Harbour Tours + Lunch \$25

The Ladysmith Maritime Society is pleased to offer harbour tours during the summer months in our restored lifeboat, the Maritimer. Over the past few years, thousands of people have enjoyed a two-hour cruise through the area's history, viewing eagles, seals, cormorants, starfish, jellyfish and other wildlife along the way. We would appreciate a donation to the society when you ride with us, as our cost to provide this service are significant. The usual donation is about \$10 for each adult and \$5 for kids. Your friendly skipper will be happy to accept your donations on board the boat.

Tour Schedule:

July and August: Daily at 10:30 am and 2:00 pm.

September: Tours in September are upon request.



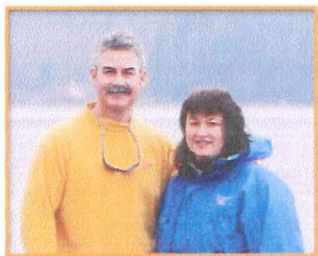
The harbour lunch tour is supported by 9 local establishments that welcome you to Ladysmith.



# KAYAKING



## About Us



Bud has been in the commercial diving business swimming BC's coastline for the past 18 years. His former career in Forestry Management and Sheryll's career in Recreation have been perfect backgrounds to form this exciting recreational and educational venture. The Bells and their four children have lived and worked in Ladysmith for the past 15 years

Sealegskayaking would like to offer Rendezvous Participants a 20% discount on a 2-hr or 4-hr guided tour.

Here are links to our wilderness tours

[http://sealegskayaking.com/kayak\\_tours\\_beach\\_tours.php](http://sealegskayaking.com/kayak_tours_beach_tours.php)

2-hour tour

\$49/person (\$39.20 discount rate)

2-person minimum

[http://sealegskayaking.com/kayak\\_tours\\_day\\_tours.php](http://sealegskayaking.com/kayak_tours_day_tours.php)

4-hr Elliott's Beach tour (catered or non-catered options)

\$79.00/person non-catered (\$63.20)

\$94/person catered (\$75.20)

3-person minimum

Tours and rentals include an introductory lesson. GST extra

Tour bookings must be made in advance. Please contact Sealegskayaking at 1-877-KAYAK BC (1-877-529-2522) one-week in advance of your Rendezvous to secure your tour.

The following are our rental rates are:

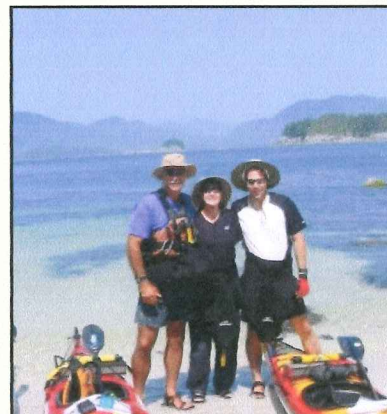
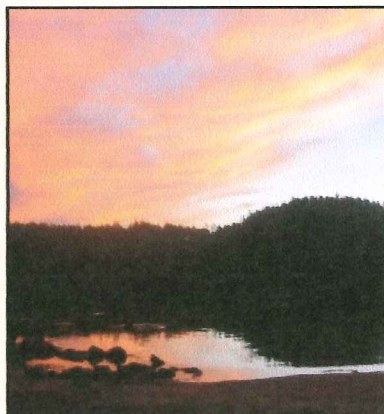
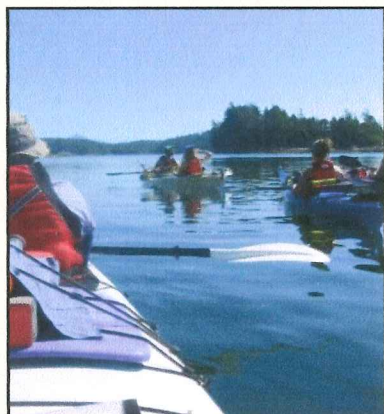
Hourly single rentals - \$18 (\$14.40)

Hourly double rental \$27 (\$21.60)

2-hr double rental (\$33.60)

Please add gst and pst to rental rates.

*If you are interested in a guided paddle, please contact Dave at 250-245-0109 to reserve your spot.*





## STZ'UMINUS DINNER & EVENT



### EXPERIENCE A STZ'UMINUS FIRST NATION CULTURAL JOURNEY

A tribal canoe will arrive at the LMS Community Marina to take you on a tribal journey and cultural dinner event. Paddle one hour across the harbour to Shell Beach where you will experience a traditional meal cooked in a pit oven. You will spend 3 hours on the beach enjoying lunch, storytelling and language teaching. Local artists and carvers will have displays of their traditional work for purchase. You will return to the LMS Community Marina once again by paddling the tribal canoe.

The cost of the cultural journey is \$75 per person.

We must pre-book 12 – 15 people.

*If you are interested in this cultural journey, please contact Dave at 250-245-0109 to reserve your spot.*

### Welcome to Stz'uminus First Nation.

We are a Coast Salish People who have lived around the [Salish Sea](#) for thousands of years. Our [traditional territory](#) on east Vancouver Island includes four reserves of more than 1,200 hectares, much of it bordering the Strait of Georgia and Ladysmith Harbour. Our Nation has 1,300 members with about half living on our reserves. We are a rapidly growing Nation, offering our members a range of opportunities, programs and services. We are a member Nation of the [Hul'qumi'num Treaty Group](#) and [Naut'sa mawt Tribal Council](#). Please travel throughout our site and find out more about our people, our culture and traditions, our government and administration, the natural world that surround us, our educational and social facilities and the economic opportunities we offer.



## WINE TOUR AND APPETIZERS



### The Island Estuary

*If you are interested in this wine tour, please contact Dave at 250-245-0109 to reserve your spot..*

Come and enjoy a relaxing day touring Vancouver Islands' vibrant wine-growing region with a chauffeured ride through the magnificent countryside. We will stop at four of the best wineries/cideries sampling unique wines at each location and enjoying a delicious "brick-oven" lunch with cider pairings. We will wrap up our experience with a "sundowner" at the Island Estuary B&B/ Culinary Retreat. Price: \$95.00 per person all inclusive (normal price \$120).

**Tour includes:** Transportation, tasting and tour fees, brick oven lunch (including gratuity) with cider pairings, bottled water, appetizers and wind up.

**Departure Location/Times:** Tours depart from the Ladysmith Marina at 10:00 am – meet your host/driver. We will "wrap-up" at the Island Estuary and return to the Marina at approximately 5:00 pm.

**Suggested Items to Bring:** Comfortable walking shoes, camera, sunscreen, umbrella and sweater should the weather turn chilly.  
Note: Participants must be 19 years of age or older.

For a full itinerary and details of each winery and cidery, contact Island Estuary B&B/Culinary Retreat at (250) 245-0665

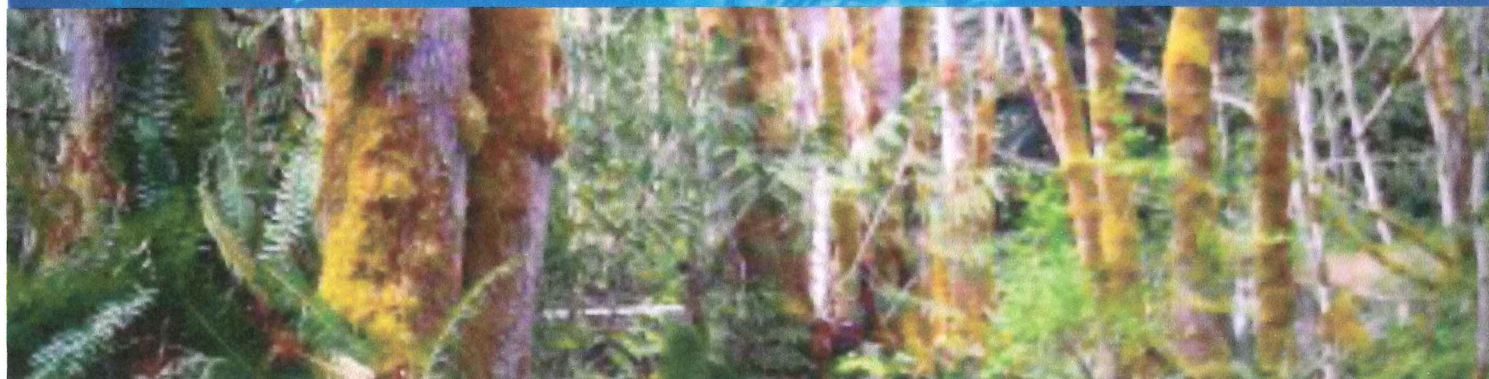
[www.islandestuary.ca](http://www.islandestuary.ca)



Contact us about our cooking retreats (250) 245-0665



## ISLAND ESTUARY GUIDED HIKE



### Guided Hike

*If you are interested in this guided hike, please contact Dave at 250-245-0109 to reserve your spot..*

Ladysmith has a trail system that has been developed over the years. Ladysmith is committed to preserving the area's natural beauty, retaining wildlife habitat and bio diversity while promoting recreational opportunities. So come and take a guided hike up to heart lake where you get spectacular views of the harbor and scenic views of the gulf islands.

20% discount for Rendezvous Participants

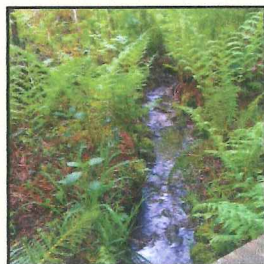
Price: \$50.00 per person all inclusive (\$40.00).

**Tour includes:** Transportation, a packed lunch, and bottled water.

**Departure Location/Times:** Tours depart from the Ladysmith Marina at 10:00 am – meet your host/driver. You will be dropped off at the Mariner at the end of the day.

**Suggested Items to Bring:** Comfortable walking shoes, camera, sunscreen, umbrella and sweater should the weather turn chilly.

Note: Participants must be 19 years of age or older.





## WILDPLAY - BUNGEE JUMP



### WILDPLAY THEME PARK

(10% discount for group bookings)

At WildPlay, we offer a full roster of activities with start times scheduled throughout the day. Some things are worth trying and will have you talking about it for years afterwards. You also have a the high ropes course which is a lot of fun and if you want to push it up notch then try the zip line - if you like that then I would highly recommend the bungee jump or the king swing.

Check-in time is **30 minutes** in advance of activity time in order for you to fill out waivers.

\$99.99 for single bungee jump; \$99.99/each for tandem jump

\$49.99 for second bungee jump, same day

\$89.99 for single kingswing.

\$159.99 for two friendly adventurous guests on a tandem swing.

### Our Forest Is Filled With Laughter

Our Monkido aerial adventure tree to tree courses are an elevated obstacle course set in a beautiful Douglas Fir forest, and securely suspended between the trees at 10 to 50 feet off the ground!

Some of the elements of the park include zip lines, suspended bridges, scramble nets and swinging logs. Come on your own or bring your group, party, or an event! You simply **MUST** try this activity!

\$39.99 Monkido Full Course

## WORLDY GORMET - COOKING CLASS

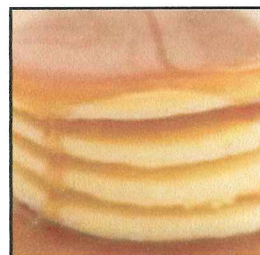


Owner and operator Jenny Jarvis has a passion and love for food. She has worked for 9 years in the film industry as a chef, serving most major stars coming to B.C.

A certified baker, Jenny owned the *Trincomali Bakery* on Galiano Island for 10 years. She has traveled the world and taken cooking classes in all the countries that she's visited.

Breakfast Cooking class  
Saturday's 8:30 - 10:30

Option 1  
Swedish Pancakes with fresh in season fruit and yogurt  
Maple syrup  
Blackberries  
\$25/ per person



Option 2  
Poached eggs on smoked salmon with home-made English muffins  
\$25/ per person



Cooking class includes instructions, meal, recipes



Attachment #4  
Letters of Support





June 4, 2010

Economic Development Commission  
410 Esplanade  
P.O. Box 220  
Ladysmith, BC  
V9G 1A2  
[www.ladysmith.ca/doing\\_business.php](http://www.ladysmith.ca/doing_business.php)

Mr. Doug Bell  
President  
Ladysmith Maritime Society  
PO Box 1030  
Ladysmith, BC V9G 1A7

Dear Mr. Bell:

**RE: LETTER OF SUPPORT FOR WESTERN ECONOMIC PARTNERSHIP APPLICATION -  
LADYSMITH COMMUNITY MARINA**

On behalf of the Ladysmith Economic Development Commission, I am pleased to provide this letter of unequivocal support for the proposed expansion of the Ladysmith Community Marina, and your Society's application to the Western Economic Partnership Agreement for funds to support it.

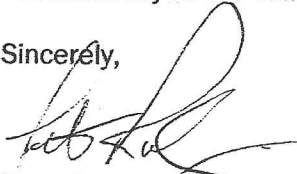
The Ladysmith Economic Development Commission (EDC) has identified the marine industry and marine tourism as a key sector in sustainable economic development for Ladysmith. The Ladysmith Community Marina expansion will provide increased economic activity for existing businesses in Ladysmith, will lead to the development of new business opportunities and investment, and will support marine tourism in the region as a whole.

The expanded and enhanced Visitor Facility will support regional marine tourism by attracting boaters exploring the waters of south-central East Coast Vancouver Island and providing them with the level of amenities they prefer. We anticipate that the increased number of visitors will create additional business for existing Ladysmith businesses. In addition, we are confident that an enhanced Community Marina on Ladysmith's waterfront will encourage the development of new businesses providing food, accommodation, and marine services. This will complement the EDC's current marketing and business attraction efforts.

The expansion of the Ladysmith Community Marina is key to the ongoing development of Ladysmith's waterfront. The Town has already invested substantially in the development of amenities such as Transfer Beach, the Amphitheatre and the Spray Park. The Community Sustainability Plan, developed with the citizens of Ladysmith, calls for development of an accessible and mixed-use, environmentally sustainable waterfront village.

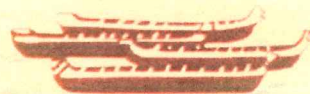
Based on the regional economic significance of the proposed Marina expansion, we believe that it is a natural fit with the aims of the WEPA program. We wish you every success in securing funding for an initiative that is so important to the long-term economic sustainability of our Town and our Region.

Sincerely,

A handwritten signature in black ink, appearing to read 'Peter Richmond', written over the word 'Sincerely,'.

Peter Richmond, Chair  
Ladysmith Economic Development Commission

cc. *Mayor & Council*



## STZ'UMINUS FIRST NATION

June 15,2010

Ladysmith Maritime Society  
P.O. Box 1030  
Ladysmith, B.C. V9G 1A7

Attention : Mr. Doug Bell  
President

I would like to say at the outset how encouraged I am personally by the initiative taken by your organization to build a broad interface of cooperative programs and interaction with Stz'uminus First Nation.

In particular, on behalf of the Stz,uminus First Nation I would like to indicate our full support for the visitor facilities project that the Ladysmith Maritime Society is proposing for the community marina. We encourage and back the project objectives and scope.

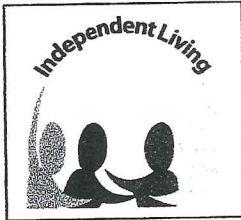
The contributions to the environmental health of the harbour and to marine tourism in Ladysmith harbour are initiatives that are particularly well aligned with the interest of the Stz'uminus First nation. We also look forward to working with you on the Visitor Reception centre so that cultures of the harbour are well expressed.

Please feel free to use this letter of support in any way that will facilitate your success with this project.

Yours Sincerely

John Elliott  
Chief

12611A Trans Canada Highway  
Ladysmith, BC V9G 1M5  
Ph. 250.245.7155  
Fax. 250.245.3012



## Cowichan Independent Living

321 Coronation Avenue, Duncan, BC V9L 2T1

Telephone: (250) 746-3930

Fax: (250) 746-3662

TTY: (250) 748-1411

Website: [www.cvilrc.bc.ca](http://www.cvilrc.bc.ca)

Email: [cvilrc@cvilrc.bc.ca](mailto:cvilrc@cvilrc.bc.ca)

*Promoting a new perspective on disability*

---

09-02-10

Ladysmith Maritime Society  
614 Oyster Bay Rd  
Ladysmith, BC

Attn: Dave Ehrismann

Dear Dave,

Cowichan Independent Living(CIL) fully supports the Ladysmith Maritime Society(LMS) in their application for funding through the Enabling Accessibility Fund that will allow them to retrofit their current gangway to one that is accessible to persons living with disabilities and wanting to access programs and services that LMS and CIL provide.

LMS currently serves as an important gathering place for persons living with disabilities and their friends and families to meet, socialize, and recreate. However, this current gangway is in need of enhancements or replacement. It has become very difficult and at times dangerous for us use the current gangway and in many cases have had to cancel the day's activities.

Cowichan Independent Living supports the Ladysmith Maritime Society in their proposal to improve the existing gangway leading down to the docks where our society provides adaptive and assistive sailing to disabled persons living in Cowichan Valley. Many of our sailors live with mobility disability and at times are unable to use the existing ramp due to size and steepness. This enhancement is badly needed in order to allow access to our program and many of Ladysmith's Maritime Societies programs and services, encouraging healthy recreation habits, improving safety and reducing risk to LMS and our society.

Having better access to safe, accessible recreation will help youth of all ages form healthy lifestyle habits while they're young. This too holds true to adults as well. We all need to have access to recreation that will allow us to live a healthier lifestyle.

The enabling accessibility fund is there to support community based projects that will improves the lives of Canadians, therefore I support this application for funding.

Sincerely,

Jim Harnden  
Executive Director





# *Spinal Cord Society*

Phone: (250) 246-9971

Fax: (250) 246-2185

**Chris J. Loscerbo B.A.**  
Vancouver Island Chapter Head

E-mail: [chris\\_loscerbo@telus.net](mailto:chris_loscerbo@telus.net)

June 23, 2011

Dear Dave and maritime society'

I just wish to commend you on the wonderful job you have made with the improvements on the dock. To sum it up it is simply fantastic.

As you know I am a quadriplegic and found at low tide that I had no trouble going down frontwards. With the old dock I had to go backwards for fear of tipping over frontwards. And the idea to have an electric golf cart to transport people who have trouble ambulating a stroke of genius. Wouldn't it be wonderful if the rest of the docks could be made of the same material and quality. There is a part of the dock that scares me as it has no railing and is just as wide as my electric wheelchair. Luckily I have no fear, however it sure would be nice if all the docks could be made the same.

The maritime society festival was an obvious success and is obviously well represented by the community and beyond the island. Keep up the good work, you guys deserve an award.

Yours sincerely,

Chris J. Loscerbo